

ERBESSD INSTRUMENTS®

# PHANTOM

General Purpose Sensor

# ERBESSD INSTRUMENTS® PHANTOM | GENERAL PURPOSE SENSOR

**PHANTOM**, the best wireless continuous monitoring system worldwide.



With the General Purpose Phantom you can adapt the data collection to your specific needs.

The signal from the Phantom sensors is encrypted which ensures the reliability of the information and the security of your data.



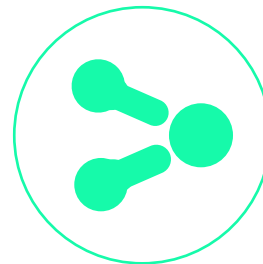
## ACCESSORIES

The General Purpose wireless sensors are able to monitor virtually **any type of signal** and is compatible with other kind of sensors.

Any sensor with a **2.2 Vpp** output voltage range is compatible with the General Purpose Phantom sensor.

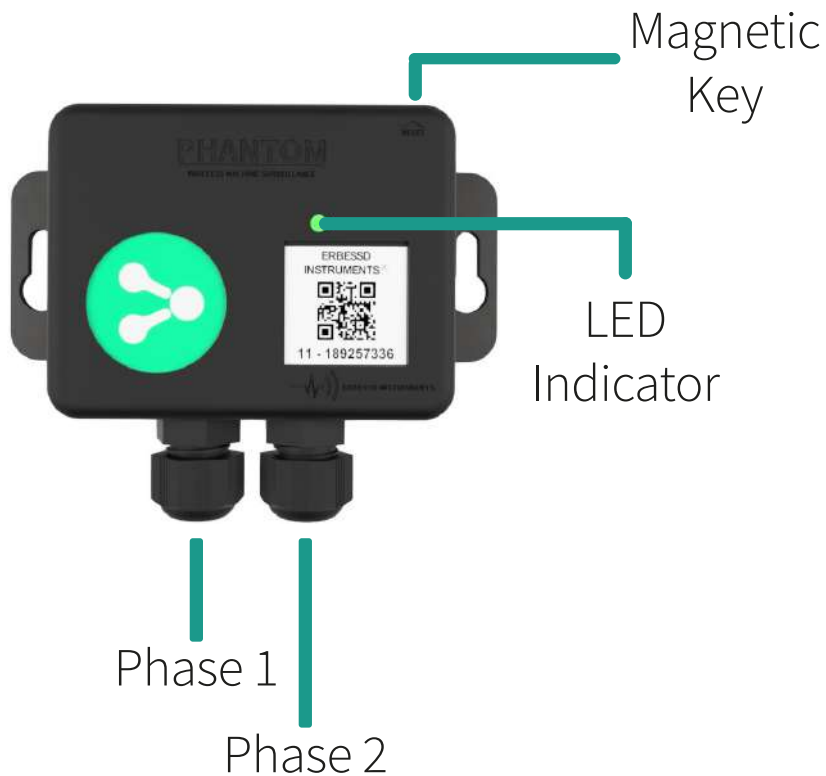


Accelerometer

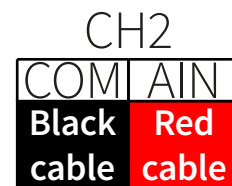
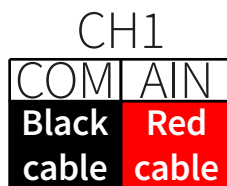
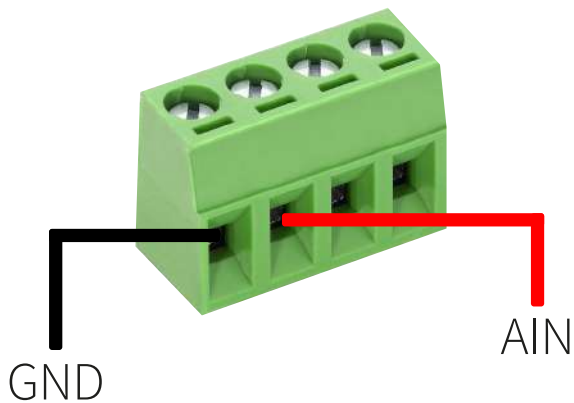


Place your sensor's cables easily with the help of a screwdriver

# QUICK GUIDE



## CONNECTION DIAGRAM



# SET UP

1- Add the sensor to your database following the indicated steps on the **Phantom Wizard**.

2- With the “**Add GPIO Sensor**” button set up your sensor type and the measured parameters and then click “**Add**”.

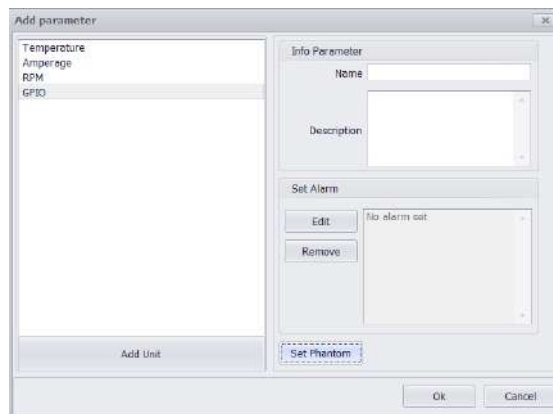


3- Locate one of your machines and right click to access to the configuration window.

Name	RPM	Axis	Alarms	Extras	Bearing	Set
Point 1	1800, 1900	H,V,A	V,AE	Accelerati...		Set
Point 2	1800, 1900	H,V,A	V,AE	Accelerati...		Set
Point 3	1800, 1900	H,V,A	V,AE	Accelerati...		Set
Point 4	1800, 1900	H,V,A	V,AE	Accelerati...		Set
Point 5	1800, 1900	H,V,A	V,AE	Accelerati...		Set

Click on “**Set**” and locate the “**Extra Parameters**” section with the “**+**” button.

4- With the “**Set Phantom**” button, search for the recently set up sensor and click Ok.



# ERBESSD INSTRUMENTS® PHANTOM | GENERAL PURPOSE SENSOR

## TECHNICAL SPECIFICATIONS

### MEASUREMENT

**Part Number:**  
EPH-G60

**AC Range:**  
2.2 Vpp

**Recording Time:**  
1 sec. per channel

**Status:**  
Battery, RMS and  
temperature information

**Data Receiving  
Interval:**  
Every 10min / Configurable

**Internal Temperature  
Accuracy:**  
±5°C

**Sample Rate:**  
31250 Hz

**Input:**  
2 Channels

### POWER SUPPLY

**Battery Lifetime:**  
2-3 years\*  
Standby Mode if Gateway not detected

**Main Power Supply:**  
2 AAA 1.5V Batteries (Replaceable)

### CONNECTIVITY AND SOFTWARE

**Wireless Protocol:**  
Bluetooth BLE 5.0 / Modbus via Gateway

**Software Compatibility:**  
DigivibeMX version  
Phantom / WiSER Vibe  
Firmware Updates via Phantom  
Manager (iOS & Android)

**Signal Strength  
Range:**  
-90dBm to -30dBm

**Wireless Range:**  
100m line sight

**Power Output Range:**  
-4dBm to +8dBm  
(Configurable)

**Operating Frequency:**  
2.4GHz

### DIMENSIONS

**Dimensions:**  
100mm x 77mm x 26mm

**Weight:**  
138 gr

**Base Temperature  
Range:**  
-40 to +80 °C  
(-40 to +176 °F)

**Material:**  
Nylamid / Aluminum

**Protection Rating:**  
Water and dust resistant (IP67)

\*Depending on user's configuration

Analyze and visualize the data  
of your sensors with

**DigivibeMX**®



Access to your information  
in an easy way trough your  
browser or DigivibeMX.

Phantom sensors are compatible with  
communication protocol



# **ERBESSD INSTRUMENTS®**

**WORLDWIDE toll-free:**

+1-877-223-4606

**ENGLISH:**

**Sales, Service & Support Engineer**

+1-518-874-2700

[info@erbessdreliability.com](mailto:info@erbessdreliability.com)

**SPANISH & FRENCH:**

**Sales, Service & Support Engineer**

+52 (55) 6280-7654 / +52 (999) 469-1603

[info@erbessd-instruments.com](mailto:info@erbessd-instruments.com)

**BUY ONLINE**

[www.erbessd-instruments.com](http://www.erbessd-instruments.com)

ALL THE IMAGES ARE FOR ILLUSTRATIVE PURPOSES ONLY. THE FINAL PRODUCT MAY VARY DEPENDING ON THE VERSION AND/OR THE CHANGES OR UPGRADES MADE TO THE PARTS AND COMPONENTS OF THE DEVICES

© 2018 ERBESSD INSTRUMENTS

PHGP-QG2020.1104.16