

# T-Series InfraRed Camera (640 x 480 IR Resolution)

With on board Visual Camera, Fusion, Touch Screen LCD & Interchangeable Lens

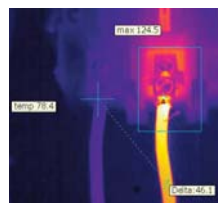
- 0.05°C @ 30°C Thermal Sensitivity
- Bright Video Lamp
- Annotate Images with Voice, Text and Sketch
- Thermal Fusion & Picture-in-Picture
- 4.3" Touch-Screen LCD Display
- Convenient 120° rotating lens
- 4X Continuous Zoom
- Delta T - Differential Temperature
- Instant Report



Multifunction Touch Screen



Thermal Fusion



Differential Temperature

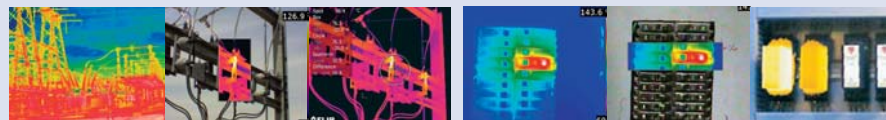
## FLIR T620 Features

- **High Resolution IR Images** — 307,200 pixels (640 x 480) Infrared resolution
- **Visible Light Digital Camera** — 5MP resolution with LED lamp provides sharp images regardless of lighting conditions
- **4X Continuous Zoom** — Zoom with auto/manual focus
- **Rotating Lens** — Rotating lens detents up to 120° for easy viewing angle
- **Scalable Thermal Fusion** — Blending of thermal and digital images
- **Scalable Picture in Picture (PIP)** — Displays thermal image super-imposed over a digital image
- **Video Lamp** — Allows the visual camera and fusion to be used in poorly lit environments
- **High Temperature Range** — measuring up to 1202°F (650°C) targeting electrical and industrial applications
- **± 2% Accuracy** — reliable temperature measurement
- **Thumbnail Image Gallery** — Allows quick search of stored images
- **Li-Ion Rechargeable Battery** — lasts >4hrs continuous use; replaceable
- **Laser LocatIR™ Pointer** — Pinpoints a reference spot with a laser and aligns a marker to it on the image
- **IR Window Correction** — Menu settings allow you to account for transmission loss through IR windows
- **Voice Comment Recording** — on images & can be integrated onto report
- **Wireless Communication** — Bluetooth® Transmitter with METERLiNK™
- **Instant Report** — Create a Thermographic Inspection report directly in the camera
- **Digital Video** — Records video to the memory card
- **Video Streaming** — MPEG4 streaming video over Wi-Fi
- **Wi-Fi Connectivity** — Sends images and data to mobile devices (ie iPhone® or iPad®) to share reports and critical information quickly
- **Programmable Button** — Program shortcuts to your favorite functions so that you're always just one click away
- **Includes** — SD Memory Card (stores >1000 Radiometric JPEG images), AC adaptor/charger, two Li-Ion rechargeable batteries, 2-bay battery charger, USB and HDMI cables, FLIR Tools software CD-ROM, Bluetooth® headset, hand strap, neck strap, camera lens cap, tripod adapter, and hard transport case
- **Interchangeable Optics** — Optional 15° Telephoto, 45° Wide Angle



Warranty extended to 2 years when the camera is registered

## Applications



**Utility Market** — Utilities worldwide use infrared cameras to locate problems or to detect hot spots and other problems before they turn into costly failures and production downtime or dangerous electrical fires.

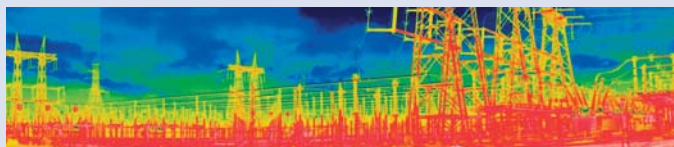
**Electrical Inspections** — With FLIR thermal imaging cameras electrical contractors can scan electrical cabinets/panels and components for a non-contact view of conditions.

## Software Packages

**QuickReport™** PC software enables users to Organize, Analyze and Create Reports with FLIR Cameras.

**FLIR BuildIR Software** package specifically designed to carry out advanced analysis of building structures. It is used to analyze images taken with an infrared camera, and create inspection reports based on these images.

**FLIR Reporter Ver. 8.5** is a powerful software for creating compelling and professional, fully customized, easy-to-interpret reports in a standard MS Word Document. You can create a report by simply Dragging and Dropping your images on a desktop icon or using the Wizards to guide you step-by-step through the process. The saved document is a 'live' report with full access to the analysis tools and temperature measurement data. The reports can be multi-page and include all of your IR inspection data -infrared and visual images, temperature measurements, voice comments and text notes.



### Panorama Function

This unique function allows you to conveniently piece together normal sized images to create one large image for a wide angle view of the area being measured by using FLIR BuildIR or Reporter Software package



**METERLiNK frees the Thermographer from the manual process of collecting field data**



Infrared cameras quickly locate problems with electrical equipment



Collecting current measurements and associating them with the right component identified on an infrared image, can be a complicated and cumbersome process



Manual data collection results in unnecessary complexity and risk. METERLiNK eliminates this problem by allowing the thermographer to quickly take a current reading on an electrical target and associate those readings with the corresponding targets stored in an infrared image



### FLIR ThermaTrak™

If your IR camera is lost or stolen, ThermaTrak can help you track where it is.

## FLIR T620 Specifications

### Features

Temperature range	-4°F to 1202°F (-20°C to 650°C)
Image Storage	1000 radiometric JPEG images (SD card memory)

### Imaging Performance / Image Presentation

Frame Rate	30Hz
Field of view/min focus distance	25° x 19°/9.8" (0.25m)
Focus	Manual/Automatic
Thermal sensitivity (N.E.T.D)	<0.05°C at 30°C
Detector Type - Focal plane array (FPA) uncooled microbolometer	640 x 480 pixels
Spectral range	7.8 to 14µm
Display	Built-in touch-screen 4.3" color LCD
Image modes	Thermal/Visual/Picture in Picture/Fusion
Image annotation	Voice (60 sec); text comments, Sketch
Lens	25° (optional 15° Telephoto, 45° Wide Angle lenses available)
Video Lamp	Bright LED lamp
Laser Classification/Type	Class 2/Semiconductor AlGaInP Diode Laser: 1mW/635nm (red)
Set-up controls	Mode selector, color palettes, configure info to be shown in image, local adaptation of units, language, date and time formats, and image gallery
Measurement modes	10 Spotmeters, 5 Box areas, Isotherm, Auto hot/cold spot, Delta T
Measurement correction	Reflected ambient temperature & emissivity correction
Battery Type/operating time	Li-Ion/ >3 hours, Display shows battery status
Charging system	In camera AC adapter/2 bay charging system
Shock	25G, IEC 68-2-29
Vibration	2G, IEC 68-2-6
Dimensions/Weight	5.6x7.7x3.7" (143x195x95mm)/2.87lbs (1.3kg), including battery
Warranty	2 years (Warranty extended to 2 years when the camera is registered)

## Ordering Information

### Part Number

**55901-0102** .....FLIR T620 Thermal Imaging InfraRed Camera (640x480) with WiFi

### ACCESSORIES\*

<b>T197865</b> .....	Li-Ion Rechargeable Battery
<b>T910814</b> .....	AC Adapter Charger (110-240V, U.S. Plug)
<b>1910490</b> .....	Cigarette Lighter Adapter Kit, 12VDC (1.2m/3.9ft cable)
<b>T197882</b> .....	2-Bay Battery Charger including Power Supply (multi plugs)
<b>T197914</b> .....	15° Telephoto Lens
<b>T197915</b> .....	45° Wide Angle Lens
<b>T197778</b> .....	BuildIR Software package
<b>T197717</b> .....	FLIR Reporter Software
<b>4114887</b> .....	FLIR ThermaTrak™

### CERTIFICATION TRAINING

**ITC LEVEL I** .....ITC Level I Certification Training per attendee

Tel: 1.877.744.FLIR | [www.extech.com/tseries](http://www.extech.com/tseries)

Specifications and prices subject to change without notice. Rev. 01/31/11-R1

Copyright © 2010 Extech Instruments Corporation (A FLIR Company). All rights reserved including the right of reproduction in whole or in part in any form.

**EXTECH**<sup>®</sup>  
INSTRUMENTS  
A FLIR COMPANY